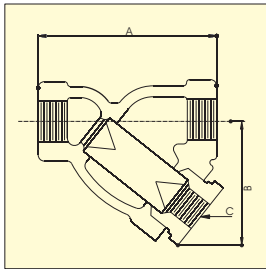


INLINE FILTERS & FILTRATION SYSTEMS

Y - TYPE STRAINER

SCREWED END



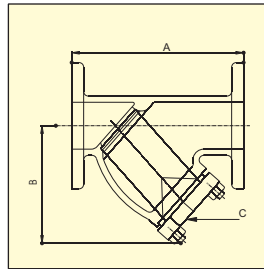
Sizes : 1/2" to 2"

End Connection : Screwed, Socket weld, Butt weld.

Screen : Stainless Steel, Brass, Monel etc.

Material : Carbon Steel, S. Steel, Forged

FLANGED END



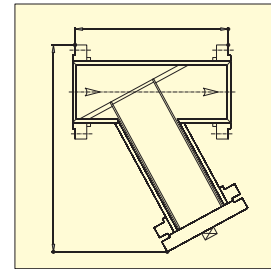
Sizes : 1/2" to 10"

End Connection : Flanged as per ANSI B 16.5, BS or DIN standard, Butt weld.

Screen : Stainless Steel, Brass, Monel etc.

Material : Carbon Steel, S. Steel

FABRICATED DESIGN

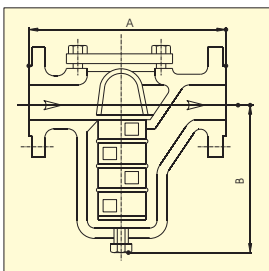


Sizes : 1/2" to 24" and above

Can be designed to suit customer requirement of free flow area and pressure drop.

BASKET TYPE STRAINER

CAST DESIGN

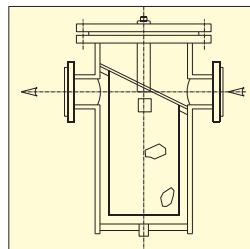


Sizes : 1/2" to 6"

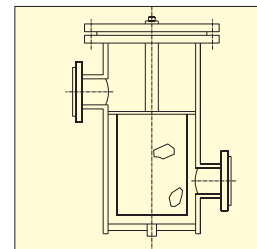
End Connection : Flanged End, Screwed, Socket weld

Material : Cast Carbon Steel, S. Steel.

FABRICATED DESIGN



IN LINE



OFF LINE

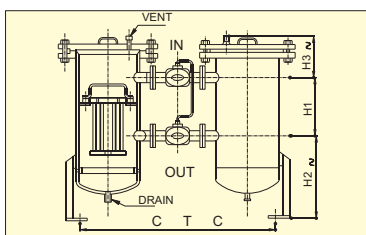
Sizes : 1/2" to 24" and above

End Connection : Flanged as per ANSI B 16.5, BS or DIN standard, Butt weld.

Material : Carbon Steel, S. Steel.

Screen : Stainless Steel, Brass, Monel etc.

DUPLEX TYPE STRAINERS / FILTERS

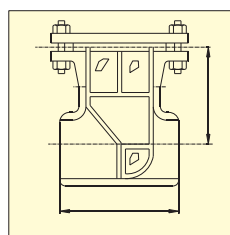


Sizes : 1" to 12"

Material : Carbon Steel, S. Steel.

Change over valve : 3 way Ball valve. Valve can be supplied with Automatic or manually operated

TEE TYPE STRAINERS



Sizes : 1" to 24" and above

Material : Carbon Steel, S. Steel (Forged / Fabricated)

End conn : Butt weld, Flanged End.

Filter Element : Stainless Steel.

OTHER FILTER / STRAINERS :

- Cartridge Filters
- Self Cleaning Filter - Manual / Auto
- Automatic Backwash Filter
- Temporary Conical Strainers
- Multi Element Filters
- Concentric Filters
- Custom Designed
- Special Types of Filters



Sangawar Pneumatics

B-115, Kalika Darshan, Parulekar Marg,
Opp. Bhavani Shankar Road, Dadar (West),
Mumbai - 400 028. INDIA. Tel. No.: 91-022-4221603

Regional Representative :